

# Providence Community Roadside Cleanup

**May 5, 2018**

**8:00 am – 12:00 Noon**

**8 hours community service available!**



## Volunteers Needed!

Come help clean up Lock 17 Road

**Meet at the intersection of Joe  
Branch Rd and Lock 17 Rd.**

**Bags, gloves, safety t-shirts provided.  
Wear long pants, No open-toed shoes.  
Free hot dog lunch for participants.**

**For more information contact:  
Jerrie Anderson 497-6335; Diane Goggins 491-9050**

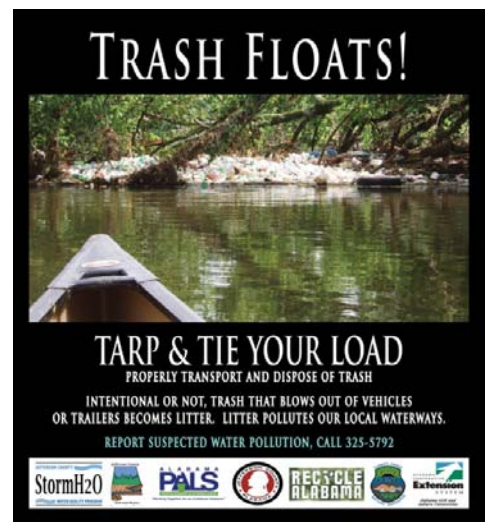
**This event is being coordinated by the  
Jefferson County Commission in conjunction with  
the Alabama People Against A Littered State (AL PALS) and  
the Providence / Lock 17 Road Community.**

# Roadside Litter is UGLY!

It is also a health hazard, a safety hazard,  
and pollutes our rivers!

Intentional or not, items that are thrown out  
of vehicles become litter. This litter  
is carried by rain and water to OUR RIVER!

Do your part and discard items in  
trash containers, not along our roads.

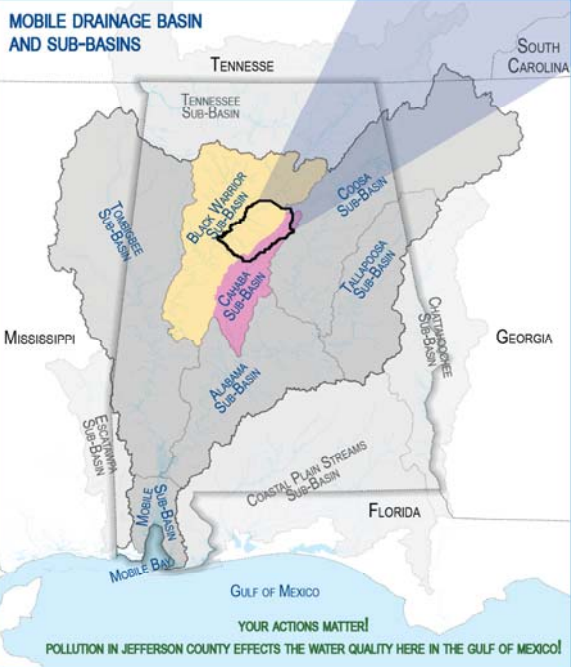
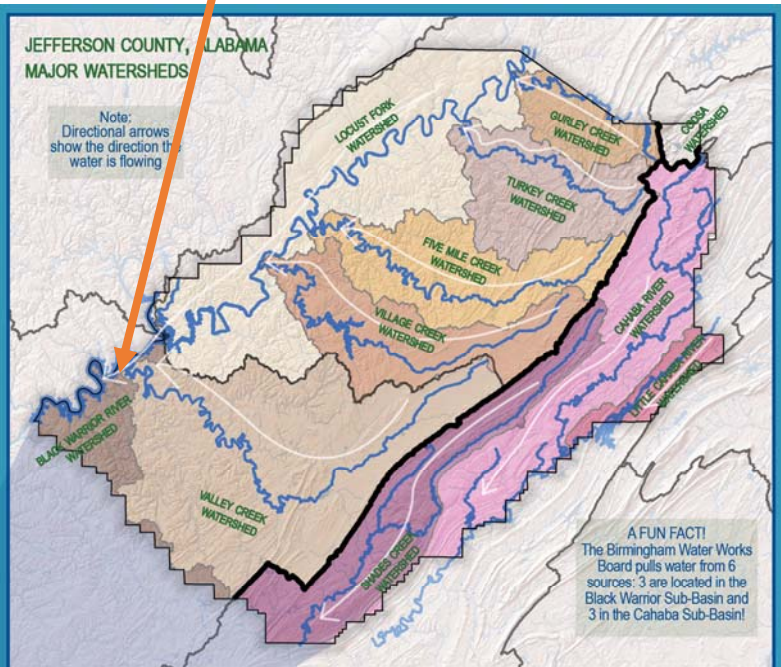


A drainage **BASIN** is a large area  
of land drained by rivers. Large  
Basins are made up of Sub-Basins.

**SUB-BASINS**  
are made up of Watersheds.

A **WATERSHED** is a land area  
whose elevation causes water to  
flow to a common waterway.

Neither Basins nor Watersheds  
follow State or Municipal  
Boundaries. They are defined by  
mountain ridges and valleys.



## Did you know?

10% of the fresh water in the continental US originates or flows  
through Alabama in its 132,000 miles of streams!

Alabama contains the greatest aquatic biodiversity of all our 50  
states with 332 species of freshwater fish!

Cahaba Sub-Basin contains the longest substantially free flowing  
river in Alabama - Cahaba River is #1!

Black Warrior Sub-Basin contains the 2nd and 3rd longest  
substantially free flowing rivers in Alabama - Locust Fork #2  
and Mulberry Fork #3!

*The maps displayed on this page have been prepared by Jefferson County  
Department of Development Services. Any use of these maps shall be at the  
sole risk of the person or entity using them. Jefferson County makes no warranty,  
expressed or implied, as to the accuracy of the information represented herein.*

*Source: Alabama Water Watch; Black Warrior River Watershed Management  
Plan; and United States Geological Survey's National Hydrography Dataset and  
Watershed Boundary Dataset*