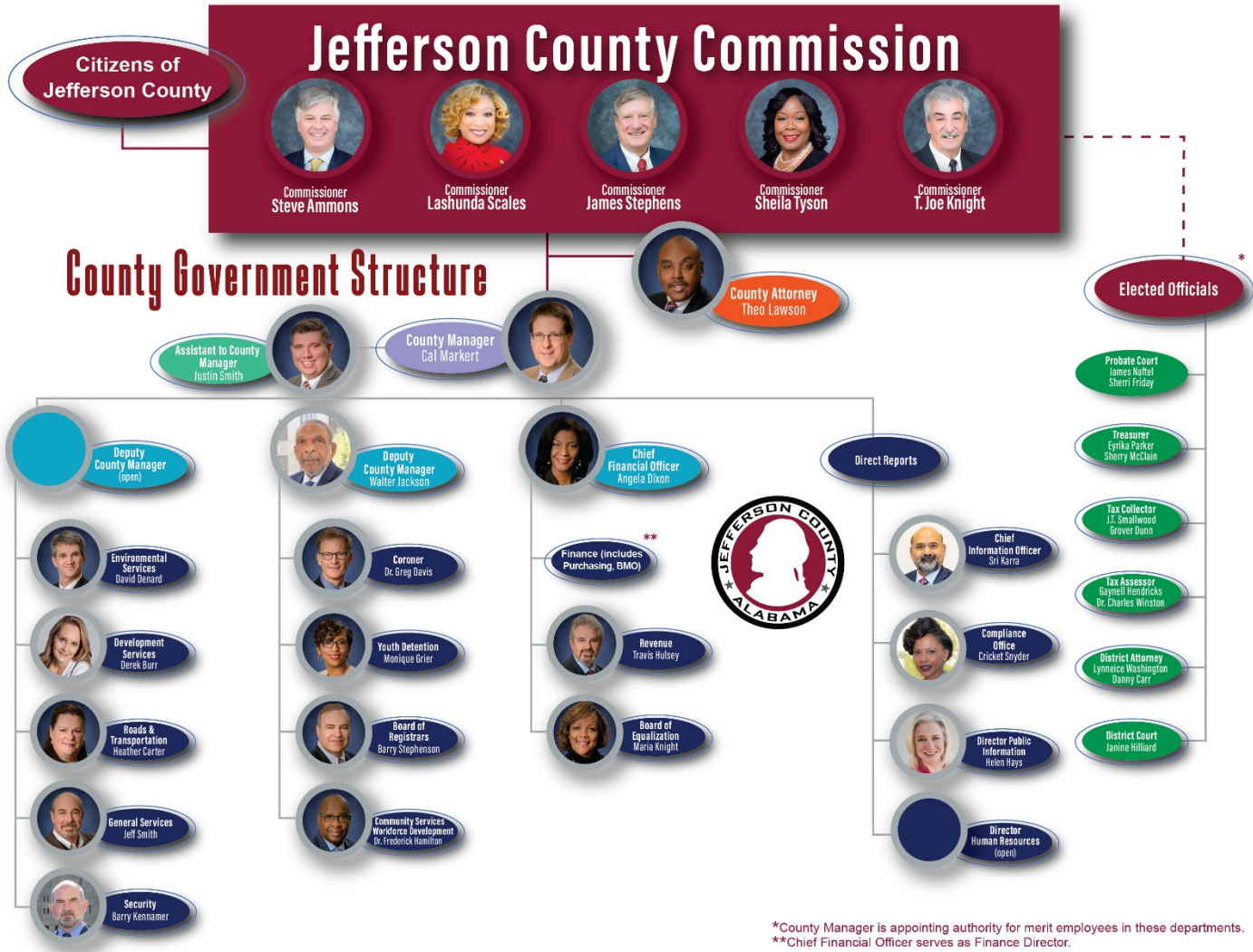


Jefferson County Commission



2021 Phone Directory

716 Richard Arrington Jr. Blvd. N.
 Birmingham, AL 35203
 205-325-5300 | www.jccal.org

JEFFERSON COUNTY EXECUTIVE LEADERSHIP

County Commission

District 1	205-214-5507
Commissioner Lashunda Roberts Scales	
District 2	205-325-5074
Commissioner Sheila Tyson	
District 3	205-325-5555
Commissioner James A. "Jimmie" Stephens	
District 4	205-325-5070
Commissioner T. Joe Knight	
District 5	205-325-5503
Commissioner Steve Ammons	

County Manager

www.jccal.org/Default.asp?ID=803&pg=County+Manager

Main	205-731-2880
Cal Markert, County Manager	
Walter Jackson, Deputy County Manager	
Angela Dixon, Chief Financial Officer	
Justin Smith, Assistant to the County Manager	
Helen Hays, Director of Public Information.....	205-731-2891

County Attorney

www.jccal.org/Default.asp?ID=231&pg=County+Attorney

Main	205-325-5688
Theo Lawson, County Attorney	
Shawna Smith, Deputy County Attorney	
Don Carrol, Assistant County Attorney	
Brent Grainger, Assistant County Attorney	
French McMillan, Assistant County Attorney	
Allison Nichols Gault, Assistant County Attorney	
Risk Management Division.....	205-325-5510

COUNTY DEPARTMENTS

Environmental Services

www.jeffcoes.org
permits.jccal.org/citizenaccess/Default.aspx

Main	205-942-0681
David Denard, Director	
Daniel White, Deputy Director	
Margaret Tanner, Deputy Director	
Steve Niemeyer, Deputy Director	
Sewer Administration	205-325-5496
Sewer Billing/Customer Care	205-325-5390
Sewer Impact	205-214-8608
24 Hour Emergency Line	205-942-0681

Development Services

www.jccal.org/Default.asp?ID=825&pg=Development+Services
permits.jccal.org/citizenaccess/Default.aspx

Main	205-325-5321
Derek Burr, Director	
Dayla Baugh, Deputy Director	
Criminal Dumping	205-582-6555
Storm Water Pollution	205-325-5792
Addressing.....	205-325-5174

Roads and Transportation

www.jccal.org/Default.asp?ID=699&pg=Roads+and+Transportation

Main	205-325-5141
Heather Carter, Director	
Robert Carr, Deputy Director	
Traffic Division.....	205-849-2341

General Services

courthouse/Default.asp?ID=159&pg=General+Services

Main	205-214-5504
Jeff Smith, Director	
Trisha Wilkins, Deputy Director	
Service Requests	205-849-2380

Bulk Stores Warehouse.....205-849-2384
Card Access205-849-2380
Elections.....205-849-2391

Security

Main205-326-5626
Barry Kennemer, Chief of Security

Coroner/Medical Examiner
www.jccal.org/coroner

Main205-930-3603
Dr. Greg Davis, Chief Coroner and Medical Examiner
Bill Yates, Chief Deputy Coroner

Juvenile Detention

Main205-325-5498
Monique Grier, Director
Juan Sepulveda, Deputy Director

Board of Registrars
www.jccal.org/Default.asp?ID=341&pg=Board+of+Registrars

Main205-325-5550
Barry Stephenson, Chairman

Community Services and Workforce Development
www.jccal.org/Default.asp?ID=583&pg=Community+Services+and+Workforce+Development
www.mycapte.org

Main205-325-5761
Dr. Frederick Hamilton, Director
Nigel Roberts, Deputy Director

Community Development.....205-521-7569
HOME Program205-521-7565
Senior Services205-325-5567
Workforce Development (CAPTE).....205-325-4480
Adult Dislocated Worker/Youth Services.....205-244-8550
Birmingham Career Center205-582-5200

Finance

www.jccal.org/Default.asp?ID=59&pg=Finance+Department
paca.jccal.org

Main205-325-1455
Angela Dixon, Chief Financial Officer/Finance Director
Tampia Anderson, Deputy Director

Accounting Division.....205-325-5630
Budget Management Office.....205-325-5765
Investor Relations Office.....205-325-5762
Purchasing Division205-325-1412
PACA.....205-325-5381

Revenue

www.jccal.org/Default.asp?ID=698&pg=Revenue
tagit.jccal.org

Main205-325-5171
Travis Hulsey, Director
Daren Lanier, Deputy Director
Eric Pruitt, Deputy Director

Enforcement Division.....205-731-2975
Bessemer Office205-481-4110
Center Point Office.....205-714-7175
Hoover Office205-497-8976
Gardendale Office205-909-3610

Board of Equalization

www.jccal.org/Default.asp?ID=245&pg=Board+of+Equalization
eringcapture.jccal.org/caportal/CAPortal_MainPage.aspx

Main205-325-5566
Maria Knight, Chairman
Margie George, Associate Member
Karen Wadlington, Associate Member

Bessemer Office205-481-4120

Information Technology Services

www.jccal.org/Default.asp?ID=689&pg=Information+Technology+Services
jeffco-al.maps.arcgis.com

Main205-325-5301
Srikanth Karra, Chief Information Officer
Antonio Crespo, Deputy Chief Information Officer

Help Desk205-325-5999

Human Resources

www.jccal.org/Default.asp?ID=479&pg=Human+Resources

Main205-325-5249

Vacant, Director
Romissa Walton, Deputy Director

Strategic Relationship Management.....205-582-6833

Employee Selection.....205-325-5349 ext 1006

Employee Services/Benefits.....205-325-5249 ext 1021

Learning and Organizational Development205-325-5249 ext 1012

Human Resources Information System (HRIS).....205-325-4259 ext 1010

Compliance Office

www.jccal.org/Default.asp?ID=1770&pg=Equity+and+Inclusion
secure.ethicspoint.com/domain/media/en/gui/55740/index.html

Main205-325-5535

Cricket Snyder, Chief Compliance Officer

Equity & Inclusion Hotline.....844-759-0034

Public Information Office

Main205-731-2891

Helen Hays, Director

ELECTED OFFICIALS

Treasurer

www.jccal.org/Default.asp?ID=369&pg=Treasurer
www.jccal.org/Default.asp?ID=1657&pg=Treasurer+%2D+Bessemer

Birmingham Office205-325-5373

Eyrika Parker, Treasurer

Bessemer Office205-481-4192

Sherry McClain, Deputy Treasurer

Tax Collector

www.jccal.org/Default.asp?ID=368&pg=Tax+Collector
eringcapture.jccal.org/caportal/

Birmingham Office205-325-5500

J.T. Smallwood, Tax Collector

Bessemer Office205-481-4131

Grover Dunn, Assistant Tax Collector

Tax Assessor

<https://www.jccal.org/Default.asp?ID=358&pg=Tax+Assessor>

<https://www.jccal.org/Default.asp?ID=363&pg=Tax+Assessor+%2D+Bessemer+Division>

<https://eringcapture.jccal.org/caportal/>

Birmingham Office205-325-5505

Gaynell Hendricks, Tax Assessor

Bessemer Office205-481-4126

Charles Winston, Assistant Tax Assessor

JEFFERSON COUNTY COURTS – Alabama’s 10th Judicial Circuit

jefferson.alacourt.gov

bessemer.alacourt.gov

The Jefferson County court system (The 10th Judicial Circuit) and affiliated offices consist of a mixture of personnel from the State of Alabama, the Jefferson County Commission, and partner agencies.

Circuit Court – Birmingham Civil Division

Presiding Judge Elisabeth French.....205-325-5200

Judge Pat Ballard.....205-325-5025

Judge Donald Blankenship205-714-3375

Judge Bernadette Green205-325-5032

Judge Marshall Hatcher205-325-5644

Judge Jim Hughey.....205-325-5365

Judge Tamara Johnson.....205-325-5388

Judge Javan Patton205-307-6971

Judge Carole Smitherman205-325-5158

Judge Robert Vance205-325-5035

Circuit Court- Bessemer Civil Division

Judge Annetta Verin.....205-497-8592

Judge Reginald Jeter205-497-8593

Circuit Court – Birmingham Criminal Division

Judge Michael Streety (Presiding Circuit Criminal).....205-327-8205

Judge Clyde Jones205-325-5395

Judge Teresa Pulliam.....205-325-5349

Judge Stephen Wallace	205-325-5325
Judge Tracie Todd	205-325-5290
Judge Alaric May	205-214-8683
Judge Shanta' Owens	205-325-5646
Judge Kechia Davis	205-325-5648

Circuit Court – Bessemer Criminal Division

Judge David Hobby.....	205-497-8572
Judge David Carpenter.....	205-497-8562

Circuit Court – Birmingham Domestic Relations Division

Judge Patricia Stephens (Presiding Domestic Relations).....	205-325-5406
Judge Nakita Blocton	205-325-5562
Judge Agnes Chappell	205-325-5022
Judge Anne Durward.....	205-325-5090

Circuit Court – Bessemer Domestic Relations Division

Judge Debra Winston.....	205-497-8530
--------------------------	--------------

Circuit Court – Birmingham Family Court Division

Judge Janine Hunt-Hilliard (Presiding Family Court).....	205-325-5538
--	--------------

District Court – Birmingham Civil Division

Judge Shera Grant (Presiding District Civil).....	205-325-5593
Judge Martha Cook	205-325-5336
Judge Ruby Davis.....	205-325-5328
Judge Debra Weston-Pickens.....	205-325-5753

District Court – Bessemer Civil Division

Judge Debra Winston.....	205-497-8530
--------------------------	--------------

District Court – Birmingham Criminal Division

Judge Katrina Ross (Presiding District Criminal)	205-325-5296
Judge William Bell, Jr.	205-325-5293
Judge Maria Fortune	205-325-5013

District Court – Bessemer Criminal Division

Judge Thomas Thrash.....	205-497-8557
--------------------------	--------------

District Court – Birmingham Family Court Division

Judge Pamela Cousins205-325-5848
Judge Alan Summers, Jr.205-214-8688

District Court – Bessemer Family Court Division

Judge Lorraine Pringle.....205-744-3555

Probate Court
jeffcoprobatecourt.com

Judge James Naftel205-325-5203
Judge Sherri Friday.....205-325-5426
Deputy Judge Elizabeth North (Bessemer)205-481-3253

Birmingham Office205-325-5420
Bessemer Office205-481-4100

Jefferson County Court Administration

Main205-325-5674

Family Court Administration
www.jccal.org/Default.asp?ID=251&pg=Family+Court

Birmingham Office205-325-5491
Bessemer Office205-744-3500

Circuit Clerk

Birmingham Office205-325-5355
Jacqueline Anderson-Smith, Circuit Clerk

Bessemer Office205-497-8510
Karen Dunn Burks, Deputy Circuit Clerk

District Attorney
www.jeffcoda.org
jeffcobessemerda.org

Birmingham Division205-325-5252
Danny Carr, District Attorney

Bessemer Division205-497-8610
Lynneice Washington, Deputy District Attorney

Public Defender

jeffcodefender.org

Main205-588-4220
Adam Danneman, Public Defender

PUBLIC SAFETY / PUBLIC HEALTH
Independent from the Jefferson County Commission

Jefferson County Sheriff's Office
jeffcosherriffal.com

Main205-325-5700
Sheriff Mark Pettway

Jefferson County Emergency Management Agency
www.jeffcoema.org

Main205-254-2318
Jim Coker, Director

Jefferson County Emergency Communications District (911)
jeffcoal911.org

Main205-783-1911
Donnie West, Director

Jefferson County Department of Health
www.jcdh.org

Main205-933-9110
Dr. Mark Wilson, Health Officer

Center Point Fire District
www.centerpointfire.com

Main205-853-5098

Rocky Ridge Fire District
www.facebook.com/RockyRidgeFireDepartment

Main205-822-0532

Forestdale Fire District
www.forestdalefire.com

Main205-798-5611

Palmerdale Fire District

www.facebook.com/pdale13

Main205-681-7779

Concord Fire District
concordfd.org

Main205-491-1170

McAdory Fire District
mcadoryfire.com

Main205-425-1028

Minor Heights Fire District
www.minorheightsfiredistrict.com

Main205-787-5540

Mt. Olive Fire & Rescue District
www.facebook.com/mtolivefiredistrict

Main205-631-2051

Corner Volunteer Fire & Rescue Service
www.facebook.com/cornervolfire

Main205-647-4403

Bagley Volunteer Fire & Rescue
www.facebook.com/pages/Bagley%20Fire%20&%20Rescue/154180921286578

Main205-648-4608

McCalla Area Fire District
www.mccallafire.com

Main205-426-5000

Eastern Valley Fire District
www.facebook.com/Eastern-Valley-Fire-District-111538432298519

Main205-424-0143

Birmingham Fire District
www.birminghamfire.com

Main205-436-4174

Rex Lake Fire District / Cahaba Valley Fire & EMR District
www.cahabavalleyfire.org

Main205-991-5267

Indian Ford Fire District
indianfordfiredistrict.com

Main205-426-2171

Glennwood Fire District
www.facebook.com/Glennwood-Fire-District-443441202507143

Main205-680-3356

Shady Grove Volunteer Fire Department
www.facebook.com/Shadygrovefire

Main205-674-1200

Antioch Volunteer Fire Department
www.facebook.com/AntiochVolunteerFire

Main205-497-8444

Warrior River Fire & Rescue Service
www.facebook.com/warriorriverfd

Main205-491-3477

North Smithfield Manor /Greenleaf Heights Fire District
www.facebook.com/NSMGLHFIRE

Main205-251-0550

Adger Volunteer Fire & Rescue
www.facebook.com/adgerfiredepartment

Main205-424-6310

Cane Creek Volunteer Fire Department

www.facebook.com/Cane-Creek-Volunteer-Fire-Department-106948251468241

Main205-966-6701

Copeland Ferry / Pumpkin Center Fire & Rescue

www.facebook.com/cfpcfir

Main205-674-0607

Wine Ridge Fire District / North Shelby Dire District

www.northshelbyfire.com

Main205-991-6439

Partner Agencies

