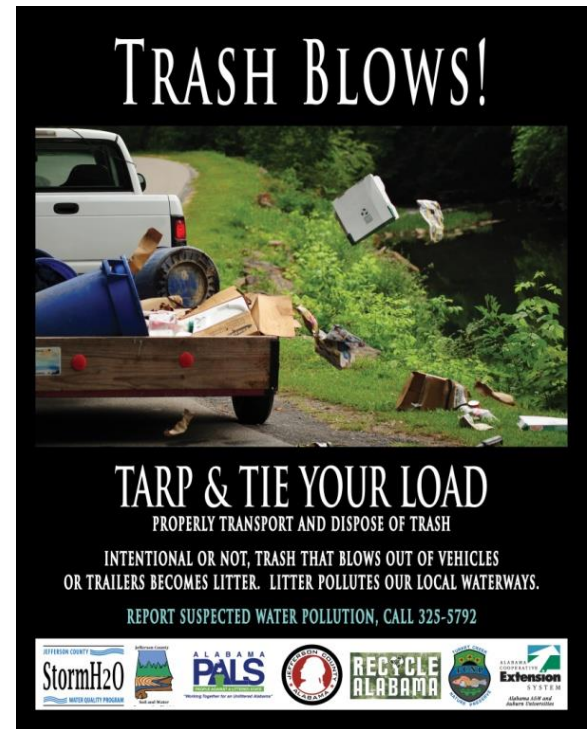


Providence Community Roadside Cleanup

April 6, 2019

8:00 am – 12:00 Noon

8 hours community service available!



Volunteers Needed!

Come help clean up Lock 17 Road

Meet at Providence Baptist Church

(1964 Bruce Shaw Road)

Bags, gloves, backpacks, safety t-shirts provided.

Wear long pants, No open-toed shoes.

Free hot dog lunch for participants.

For more information contact:

Diane Goggins 491-9050; Jerrie Anderson 497-6335

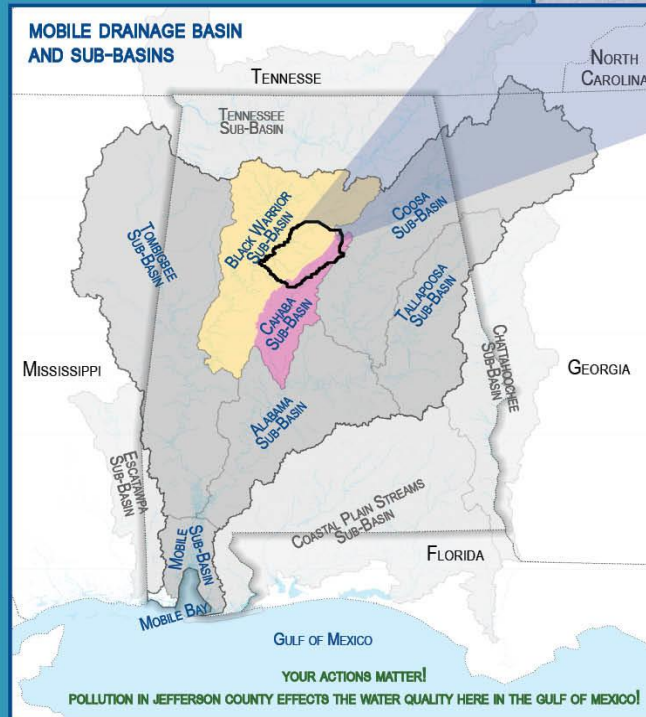
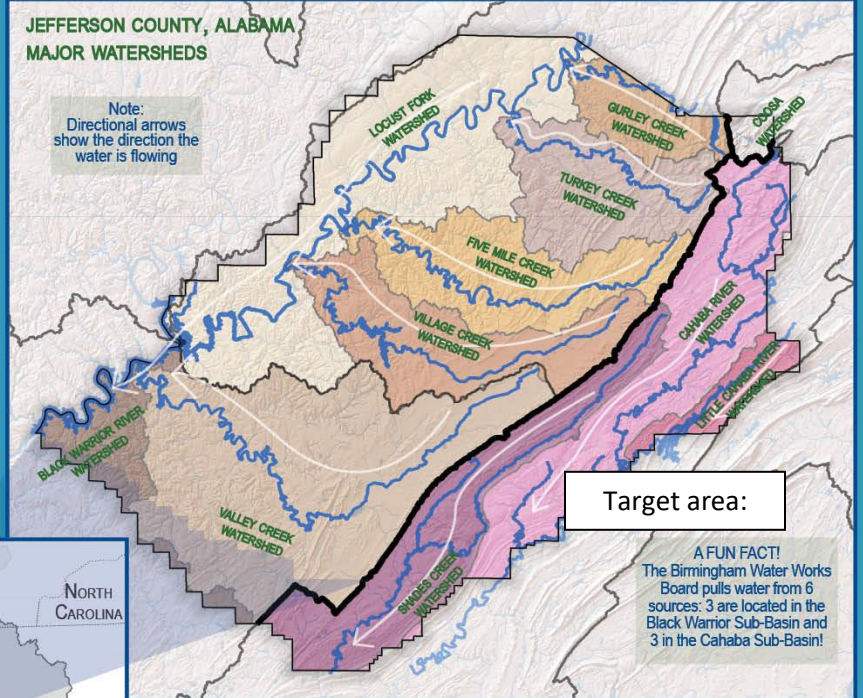
This event is being coordinated by the
Jefferson County Commission in conjunction with
the Alabama People Against A Littered State (AL PALS) and
the Providence / Lock 17 Road Community.

Jefferson County has 10 Major Watersheds: Black Warrior River, Cahaba River, Five Mile Creek, Gurley Creek, Little Cahaba River, Shades Creek, Turkey Creek, Valley Creek and Village Creek; the biggest being Valley Creek.

A drainage **BASIN** is a large area of land drained by rivers. Large Basins are made up of Sub-Basins.

SUB-BASINS are made up of Watersheds.

A **WATERSHED** is a land area whose elevation causes water to flow to a common waterway.



The maps displayed on this page have been prepared by Jefferson County Department of Development Services. Any use of these maps shall be at the sole risk of the person or entity using them. Jefferson County makes no warranty, expressed or implied, as to the accuracy of the information represented herein. Source: Alabama Water Watch, Black Warrior River Watershed Management Plan, and United States Geological Survey's National Hydrography Dataset and Watershed Boundary Dataset

Roadside Litter target area cleanup:

